

Contents

	Page
i	Foreword
1	Number of Universities/DAIs in Pakistan (1947 to 2004-05) 1
2	Enrollment.
2.1	Enrollment in Higher Education Institutions.....1
2.2	Enrollment by Gender.....5
2.3	Enrollment by Area and Sector8
2.4	Enrollment by Level of Degree.12
3	Student Output
3.1	Student Output15
4	Faculty.
4.1	Full and part Time Faculty.....16
4.2	Student Teacher Ratio.....18
5	Access to University Education
5.1	Population Having Access to University Education.....18
6	Finances.....19

Foreword

It is understood that access to reliable statistical data is essential for good planning. Keeping in view the importance of Statistics, “Statistical Booklet on Higher Education” is being published with the primary purpose of making available as a ready reference, reliable statistical material covering the broad field of Higher Education in Pakistan. This material is generally required by the national and international policy makers, planners, researchers and people interested in Higher Education system in Pakistan for their day to day needs.

The information contained in this publication has been collected using a questionnaire designed by the Higher Education Commission. Information provided by the Universities and Degree Awarding Institutions was logically checked for validity.

The information provided in this publication is provisional and work has been initiated for the creation of a comprehensive database at subject level. Suggestions for the improvement of this booklet are welcome.

Prof. Dr. S. Sohail H. Naqvi
Executive Director,
Higher Education Commission

Acknowledgements

I am thankful to all the public and private sector Universities/Degree Awarding Institution (DAIs) for providing their full support and cooperation in providing the reliable information.

I am thankful to both Dr. Mukhtar Ahmad Member (O&P) and Dr. S. Mehmood Raza Advisor (R&D) for their full administrative support.

Unconditional and devoted service given by Mr. Faisal Azam in the development of the database, needs to be appreciated.

I am really grateful to Prof. Dr. Riaz Hussain Qureshi Advisor (QA & LI) for his dedicated support, guidance and personal efforts in the collection of the data from the Universities/DAIs.

I am grateful to Prof. Dr. Sohail H. Naqvi , Executive Director for his full support, push and for initiating the work on this publication.

I am extremely grateful to Prof. Dr. Atta-ur-Rahman, Chairman, Higher Education Commission for his great vision, patience and his personal efforts in getting reliable information.

Ahmad Yahya Khan
Director Statistics
HEC

STATISTICS ON HIGHER EDUCATION IN PAKISTAN

Introduction:

In view of the increasing day to day demand of Statistics about University and Degree Awarding Institutions (DAIs). It was strongly felt that provisionally, the available information be compiled and published in the form of a Statistical Booklet for ready reference.

The compiled information is based on the data provided by 101 Universities/DAIs and covers the period of three years i.e. 2001-02 to 2003-04.

Full efforts has been made to avoid double and triple counting of students in a year due to semester system.

1 Number of Universities /DAIs in Pakistan

At the time of creation of Pakistan in 1947, there were only two Universities in Pakistan, namely University of The Punjab and University of Sindh, Jamshoro.

The first university in the private sector was Aga Khan University established on 2.3.1983. There was a sharp increase in the number of universities, both in public and private sector after 1995-96 as shown in **Fig. 1**. The number of Universities and Degree Awarding Institutions (DAIs) in Public and Private Sector are given in **Table 1**.

2 Enrollment

2.1 Enrollment in Higher Education Institutions.

The information is based on data from 101 universities/DAIs, which revealed that there were 276274, 331745 and 423236 students enrolled at University campuses during year the 2001-02, 2002-03 and 2003-04 respectively, showing an increase of 20.1 % and 27.6 % in the enrollment during 2002-03 and 2003-04 respectively. **Fig 2**.

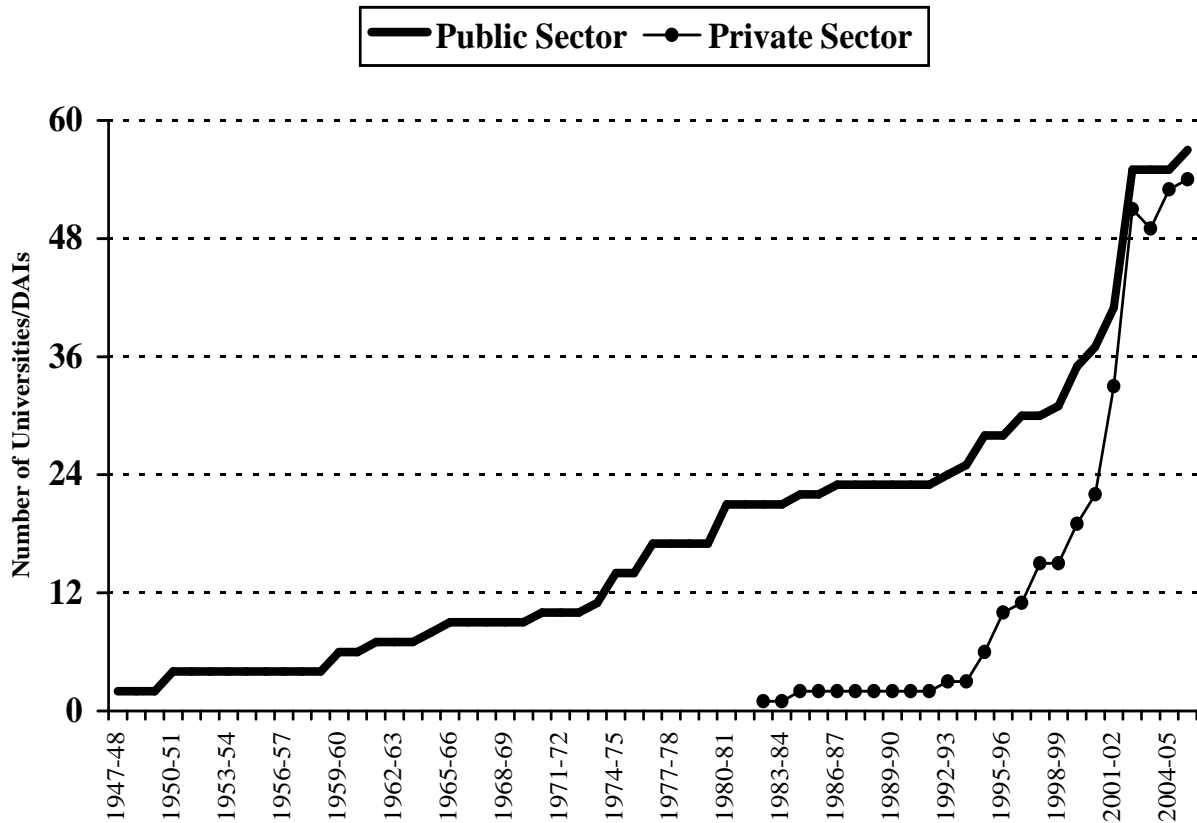


Fig 1. Growth of Universities/DAIs in Public and Private Sector (1947-48 to 2005-06).

Table 1: Number of Public and Private Sector Universities & Degree Awarding Institutions (DAIs) in Pakistan.

Year	Universities				Degree Awarding Institutions			
	Public		Private		Public		Private	
	Total	Female	Total	Female	Total	Female	Total	Female
1947-48	2	-	0	-	0	-	0	-
1950-51	4	-	0	-	0	-	0	-
1959-60	5	-	0	-	1	-	0	-
1960-61	5	-	0	-	1	-	0	-
1961-62	6	-	0	-	1	-	0	-
1963-64	6	-	0	-	1	-	0	-
1964-65	7	-	0	-	1	-	0	-
1965-66	7	-	0	-	2	-	0	-
1970-71	8	-	0	-	2	-	0	-
1971-72	8	-	0	-	2	-	0	-
1972-73	8	-	0	-	2	-	0	-
1973-74	9	-	0	-	2	-	0	-
1974-75	12	-	0	-	2	-	0	-
1975-76	12	-	0	-	2	-	0	-
1976-77	15	-	0	-	2	-	0	-
1977-78	15	-	0	-	2	-	0	-
1978-79	15	-	0	-	2	-	0	-
1979-80	15	-	0	-	2	-	0	-
1980-81	19	-	0	-	2	-	0	-
1981-82	19	-	0	-	2	-	0	-
1982-83	19	-	1	-	2	-	0	-
1983-84	19	-	1	-	2	-	0	-
1984-85	19	-	2	-	3	-	0	-
1985-86	19	-	2	-	3	-	0	-
1986-87	20	-	2	-	3	-	0	-
1987-88	20	-	2	-	3	-	0	-
1988-89	20	-	2	-	3	-	0	-
1989-90	20	-	2	-	3	-	0	-
1990-91	20	-	2	-	3	-	0	-
1991-92	20	-	2	-	3	-	0	-
1992-93	21	-	3	-	3	-	0	-
1993-94	22	-	3	-	3	-	0	-
1994-95	25	-	4	-	3	-	2	-
1995-96	25	-	7	-	3	-	3	-
1996-97	27	-	7	-	3	-	4	-
1997-98	27	-	10	1	3	-	5	-
1998-99	28	1	10	1	3	-	5	-
1999-00	31	2	13	1	4	-	6	-
2000-01	32	2	14	1	5	-	8	-
2001-02	36	2	20	1	5	-	13	-
2002-03	45	2	31	1	7	1	13	-
2003-04	47	3	34	1	8	1	17	-
2004-05*	47	3	32	1	8	1	17	-
2004-05	47	3	34	1	8	1	19	-
2005-06**	49	4	36	1	8	1	18	-

* DHA Suffa University Karachi, Nazeer Hussain University withdrawn from HEC list, due to lack of physical, financial & academic infrastructure.

** Institute of South Asia Upgraded to University in July 2005. Kinnard College for Women shifted from Public to Private sector.

Note: The years before 1970-71, where there is no change in the data, is not given.

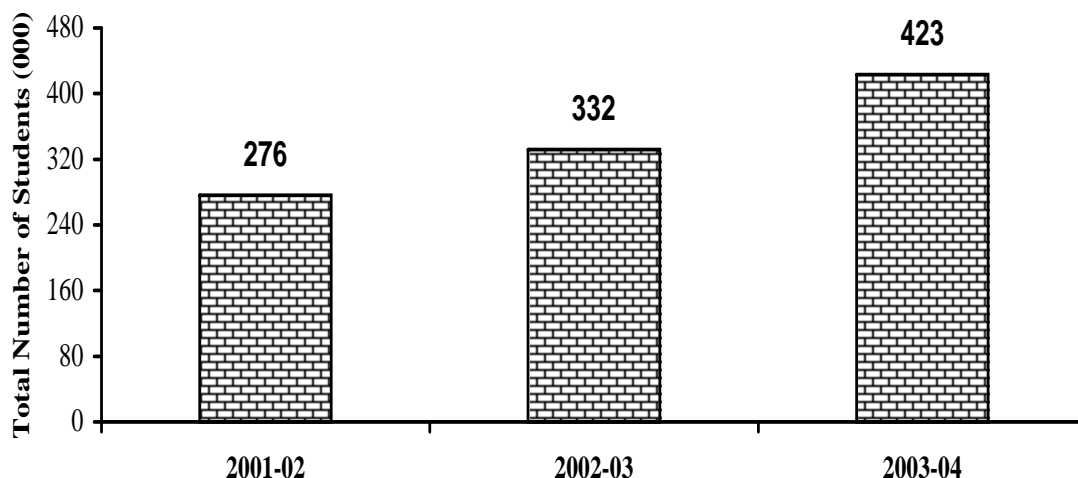


Fig. 2: Student Enrollment at University (Campus + Constituent Colleges) during Period 2001-04.

2.2 Enrollment by Gender

The increase in enrollment of female students was more as compared to male students during 2003-04. Gender-wise enrollment and percentage enrollment of female students is shown in Fig.3a and 3b. While degree wise information is given in Table 2. Percentage of male students to total enrollment decreased from 63.04 to 57.68 % during 2001-02 and 2003-04 respectively. Gender-wise Enrollment by Area and by Sector is given in Table 3 & Table 4.



Fig. 3a: Gender-wise Enrollment during 2001-04.

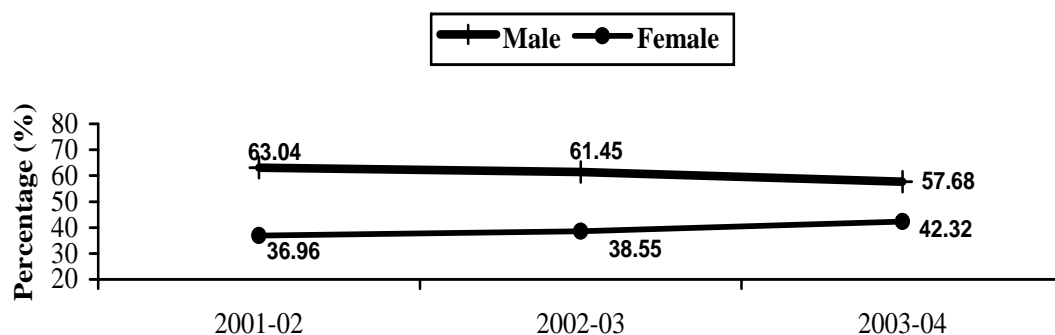


Fig 3b: Percentage of Male and Female Student Enrollment during the period 2001-04.

Table 2: Gender wise Enrollment at Universities/DAI (including Constituent Colleges) by Level of Degree during the Period 2001-04.

Level of Degree	2001-02		2002-03		2003-04	
	Male	Female	Male	Female	Male	Female
Bachelors	117827	68654	137695	86595	167072	128640
Master	48255	30274	56714	37810	64879	43788
M.Phil	2556	1315	3150	1692	4708	2746
Ph.D	2435	689	3122	1016	4662	1810
PGD	3431	838	2998	953	3192	1739
Total	174504	101770	203679	128066	244513	178723

Table 3: Gender wise Enrollment at Universities/DAI (including Constituent Colleges) by Area during the Period 2001-04.

Area	2001-02		2002-03		2003-04	
	Male	Female	Male	Female	Male	Female
Federal *	62184	48160	75876	62795	97927	97893
AJK	1111	516	1527	671	1676	708
Balochistan	3425	959	3670	1085	4421	1360
NWFP	22811	7183	25310	7976	27546	9134
Punjab	40364	21218	48535	29088	62224	40557
Sindh	44609	23734	48561	26451	50719	29071
Total	174504	101770	203679	128066	244513	178723

* = Including Distance Learning

Table 4: Gender wise Enrollment at Public and Private Sector Universities/DAI (including Constituent Colleges) during the Period 2001-04.

Sector	2001-02		2002-03		2003-04	
	Male	Female	Male	Female	Male	Female
Public	141569	90832	162407	114077	199553	162575
Private	32935	10938	41272	13989	44960	16148
Total	174504	101770	203679	128066	244513	178723

2.3 Enrollment by Area and Sector

Area wise enrollment for the period 2001-04 is shown in Fig. 4a, 4b and 4c, corresponding figures are given in Table 5a, 5b and 5c. The maximum enrollment of 68,343 students was in the province of Sindh, followed by the Punjab having enrollment of 61582 students during 2001-02. In Punjab there was a rapid increase in the student enrollment at the Universities/DAIs. Student enrollment in the province of Punjab was 102,781, whereas in Sindh province it was 79,790 during the period 2003-04.,

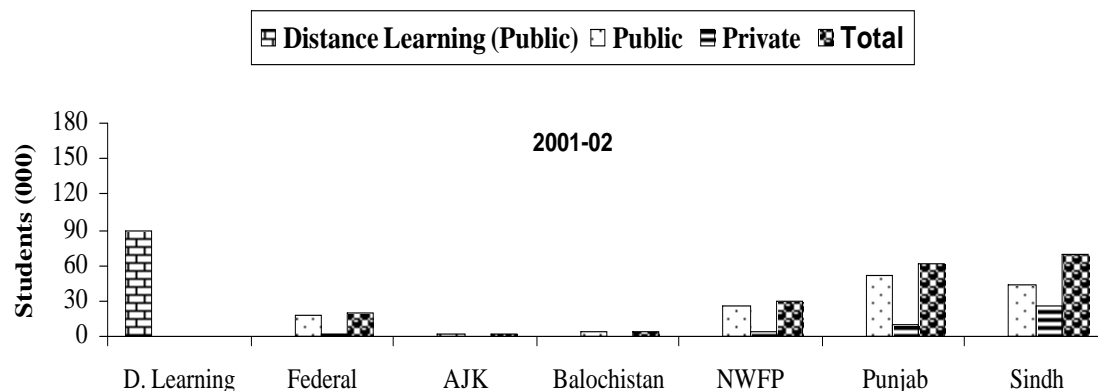


Fig. 4a Area and Sector wise Enrollment at Universities/DAI + Constituent Colleges during 2001-02.

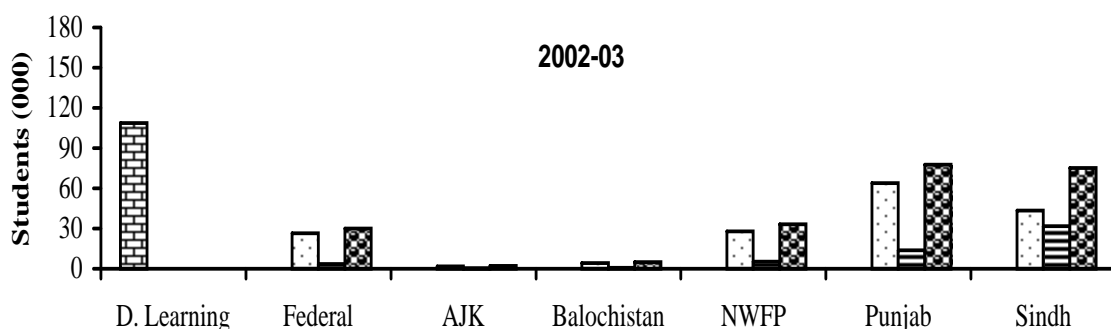


Fig. 4b Area and Sector wise Enrollment at Universities/DAI + Constituent Colleges during 2002-03.

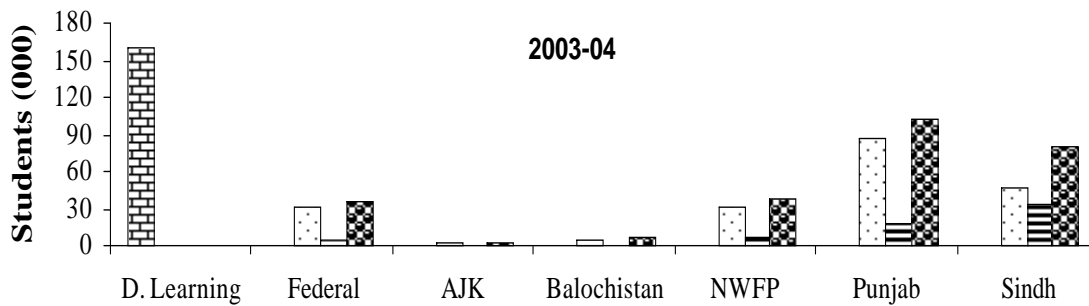


Fig. 4c Area and Sector wise Enrollment at Universities/DAI + Constituent Colleges during 2003-04.

Table 5a: Enrollment at Universities/DAI + Constituent Colleges by Area and Sector during 2001-02.

Sector	Distance Learning	Federal	AJK	Balochistan	NWFP	Punjab	Sindh
Public	89749	17791	1568	4110	25425	51071	42687
Private	-	02804	59	274	4569	10511	25656
Total	89749	20595	1627	4384	29994	61582	68343

Table 5b: Enrollment at Universities/DAI + Constituent Colleges by Area and Sector during 2002-03.

Sector	Distance Learning	Federal	AJK	Balochistan	NWFP	Punjab	Sindh
Public	108709	26305	1870	4374	27988	63945	43293
Private	-	3657	328	581	5298	13678	31719
Total	108709	29962	2198	4955	33286	77623	75012

Table 5c: Enrollment at Universities/DAI + Constituent Colleges by Area and Sector during 2003-04.

Sector	Distance Learning	Federal	AJK	Balochistan	NWFP	Punjab	Sindh
Public	159257	31843	2005	5217	30815	86032	46959
Private	-	4720	379	564	5865	16749	32831
Total	159257	36563	2384	5781	36680	102781	79790

There are three types of Universities/DAIs working in the country,

- i. Distance Learning Universities, i.e. Allama Iqbal Open University and Virtual University .
- ii Public Sector Universities/DAIs
- iii Private Sector Universities/DAIs.

The share of distance learning universities in total enrollment increased from 32 % to 38 % , share of public sector universities reduced from 52 % to 48 % and Private sector from 16% to 14% during 2001-02 and 2003-04 respectively, The share and enrollment of each type of university is shown in Fig 5, Fig 6 and Table 6.

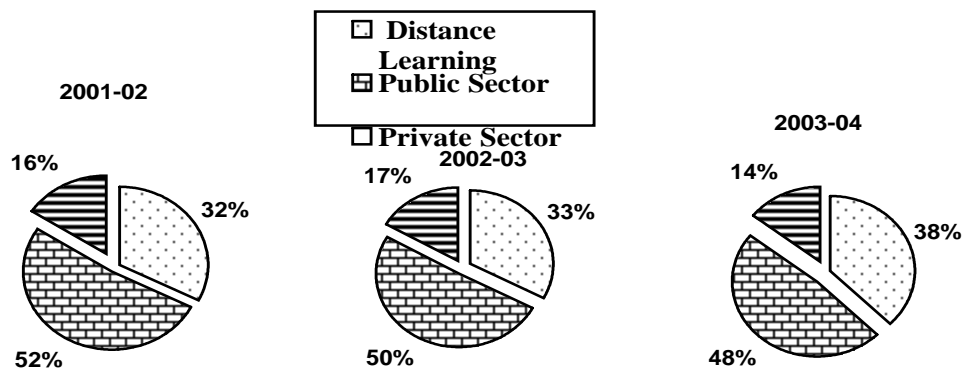


Fig 5. Share by Type of Universities/DAI in Total Enrollment during 2003-04.

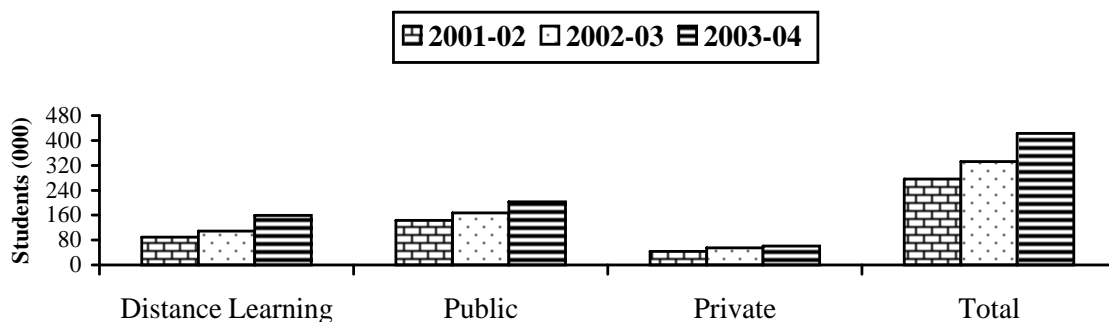


Fig.6 : Student Enrollment Classified by Type of University/DAI.

Table 6: Enrollment at Universities/DAI + Constituent Colleges by Sector.

Year	Distance Learning	Public	Private	Total
2001-02	89749	142652	43873	276274
2002-03	108709	167775	55261	331745
2003-04	159257	202871	61108	423236

Private universities/DAIs are more popular among the students in the province of Sindh as compared to other areas of the country, having a share of 42 %. In Punjab, NWFP and Federal area the share of private universities is unchanged since 2001-02. In AJK and Balochistan, the share of private sector is showing increasing trend. Detail is given in **Table 7**.

Table 7: Share (%) of Public & Private Sector Universities/DAIs in Total Enrollment, Excluding Distance Learning Universities Classified by Area.

Area	Public			Private		
	2001-02	2002-03	2003-04	2001-02	2002-03	2003-04
Federal	86.39	87.79	87.09	13.61	12.21	12.91
AJK	96.37	85.08	84.10	3.63	14.92	13.90
Balochistan	93.75	88.27	90.24	6.25	11.73	9.76
NWFP	84.77	84.08	84.01	15.23	15.92	15.99
Punjab	82.93	82.38	83.70	17.07	17.62	16.30
Sindh	62.46	57.71	58.85	37.54	42.29	41.15
Overall	76.48	75.22	76.85	23.52	24.78	23.15

2.4 Enrollment by Level of Degree

Majority of the students i.e. out of total enrollment of 423236 students, share of Bachelors enrollment was 68.87 %, Masters, 25.67 %, M. Phil. 1.76 %, Ph.D. 1.53 % and Post Graduate Diploma/Certificates was 1.17% during 2003-04. Student enrollment during the period 2001-04, classified by level of education is shown in **Fig. 7** and by sector is given in **Table 8**. Enrollment at Distance Learning Institutions by level of degree is shown in **Fig 8** and given in **Table 9**.

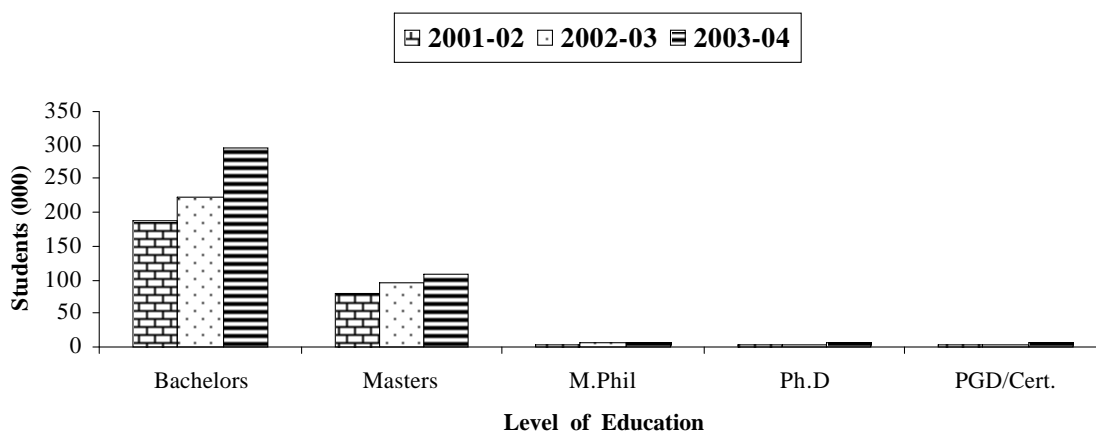


Fig 7. Number of Students Enrolled for Different Level of Degree over Years.

Table 8: Number of Students Enrolled by Sector and Level of Degree over the Years.

Sector	Year	Bachelor	Master	M. Phil.	Ph.D.	PGD	Total
Public	2001-02	156141	66675	3683	3061	2841	232401
	2002-03	186602	78709	4462	4045	2666	276484

	2003-04	252841	92613	6802	6277	3595	362128
Private	2001-02	30340	11854	188	63	1428	43873
	2002-03	37688	15815	380	93	1285	55261
	2003-04	42871	16054	652	195	1336	61108
Overall	2001-02	186481	78529	3871	3124	4269	276274
	2002-03	224290	94524	4842	4138	3951	331745
	2003-04	295712	108667	7454	6472	4931	423236

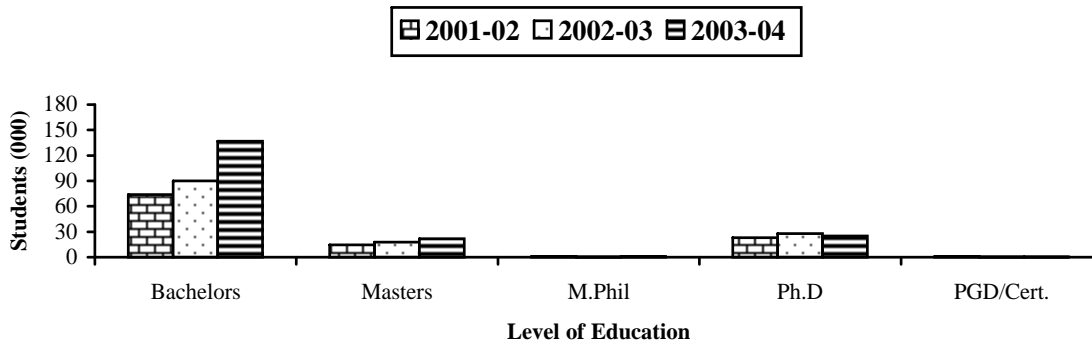


Fig 8. Number of Students Enrolled at Distance Learning Institutions for Different Level of Degree over Years.

Table 9: Number of Students Enrolled in Distance Learning Institutions by Level of Degree over the Years.

Sector	Year	Bachelor	Master	M. Phil.	Ph.D.	PGD	Total
Allama Iqbal Open University	2001-02	73330	14614	619	23	614	89200
	2002-03	86859	17912	453	28	368	105620
	2003-04	133077	21672	608	25	250	155632
Virtual University	2001-02	549	0	0	0	0	549
	2002-03	3089	0	0	0	0	3089
	2003-04	3625	0	0	0	0	3625
Overall	2001-02	73879	14614	619	23	4269	89749
	2002-03	89948	17912	453	28	3951	108709
	2003-04	136702	21672	608	25	4931	159257

3.1 Student Output.

Number of students produced, at different level of territory education by the public and private sector universities/DAIs have been increasing over the years. A total of 91533, 107499 and 118056 students were produced during 2001-02, 2002-03 and 2003-04 respectively. Number of students produced by level of degree are given in **Table 10** and graphically shown in **Fig 9**. Area and Sector wise information is given in **Table 11** and **Table 12**.

Table 10: Number of Students Produced by Level of Degree during 2001-04.

Level of Degree	2001-02			2002-03			2003-04		
	Male	Female	Total	Male	Female	Total	Male	Female	Total
Bachelor	31714	25535	57249	37243	33372	70615	40350	41714	82064
Master	19178	12305	31483	19879	13729	33608	18928	13105	32033
M. Phil.	393	284	677	470	363	833	516	343	859
Ph. D.	155	72	227	206	84	290	216	78	294
PGD	1332	565	1897	1534	619	2153	1789	1017	2806
Total	52772	38761	91533	59332	48167	107499	61799	56257	118056

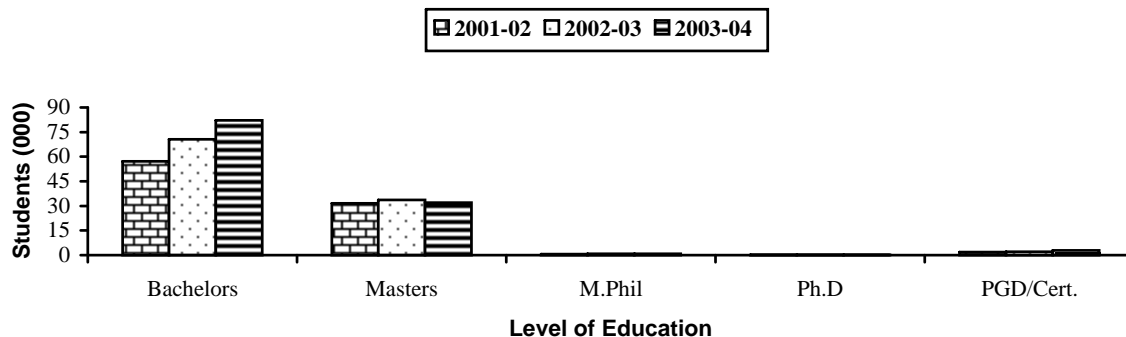


Fig. 9: Number of Students Produced by Level of Degree.

Table 11: Number of Students Produced by Public and Private Sector during 2001-04.

Sector	2001-02			2002-03			2003-04		
	Male	Female	Total	Male	Female	Total	Male	Female	Total
Public	47293	36705	83998	52659	45637	98296	53064	53150	106214
Private	54793	2056	7535	6673	2530	9203	8735	3107	11842
Total	52772	38761	91533	59332	48167	107499	61799	56257	118056

Table 12: Number of Students Produced by Area during 2001-04.

Area	2001-02			2002-03			2003-04		
	Male	Female	Total	Male	Female	Total	Male	Female	Total
Federal **	27219	23752	50971	30313	28700	59013	30211	31276	61487
AJK	359	161	520	491	240	731	422	167	589
Balochistan	927	309	1236	909	320	1229	849	321	1170
NWFP	7435	2682	10117	7867	2841	10708	7492	3080	10572
Punjab	8759	6534	15293	11814	10380	22194	12794	*15266	28060
Sindh	8073	5323	13396	7938	5686	13624	10031	6147	16178
Total	52772	38761	91533	59332	48167	107499	61799	56257	118056

* = Due University of Education.

** = Including Distance Learning.

4 Faculty

4.1 Full and Part Time Faculty

There were 37,428 faculty members during 2003-04, out of which 14,616 were Full Time and 22,812 were Part Time faculty members in the Public and Private sector universities. The major contribution in part time faculty is that of Distance Learning universities having 17,620 faculty members.

The share of part time faculty to total faculty was 21.12 % and 36.00% in Public sector (excluding Distance Learning) and Private sector universities respectively.

Number of Full and Part Time faculty is given in Table 13 . Full Time faculty members according to their highest degree are given in Table 14 and shown in Fig. 10.

Table 13: Number of Full and Part Time Faculty Members by Public & Private Sector Universities/DAIs during 2003-04.

Sector	Full Time	Part Time	Total
Distance Learning	182	17620	17802
Public	10471	2975	13446
Private	3963	2217	6180
Overall	14616	22812	37428

Table 14: Full Time Faculty Members Classified by their Highest Qualification during 2003-04.

Sector	Bachelors	Masters	Master (H)	M. Phil.	Ph.D.	Total
Distance Learning	9	110	0	22	41	182
Public	1059	4525	1319	1019	2549	10471
Private	1151	1480	508	284	540	3963
Overall	2219	6115	1827	1325	3130	14616

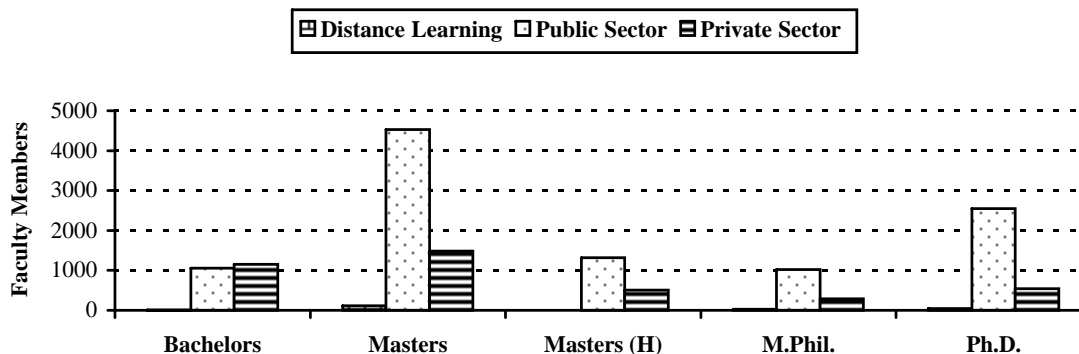


Fig.10.

Full Time Faculty Members, classified by their Highest Qualification.

4.2 Student Teacher Ratio.

Number of Students per teacher during year 2003-04 is given in Table 15.

Table 15: Student Teacher Ratio for the Year 2003-04.

Sector	Faculty		Overall
	Full Time	Part Time	
Distance Learning	875.04	9.04	8.95
Public	19.37	68.20	15.09
Private	15.42	27.56	9.89
Overall (Including Distance Learning)	28.96	18.55	11.34
Overall (Excluding Distance Learning)	18.29	50.84	13.45

5 Population having Access to University Education.

Estimated Population aged 18 to 26 years, Student Enrollment at University Campus and Literacy Level at University Campus is given in **Table 16**.

Estimated population aged 18 to 23 Years, Student Enrollment at University Campus Excluding Ph.D. and Literacy Level at University Campus is given in **Table 17**.

Table 16: Percentage of Population Between Age Group 18 to 26 years, Enrolled at University Campus for Higher Education.

Year	Est. Pop Age Group 18 to 26 yrs. (Million) *			Enrollment Including Ph.D. (Million)			Enrollment at University Campus (%)		
	Male	Female	Total	Male	Female	Total	Male	Female	Total
2001-02	11.98	11.74	23.72	0.175	0.102	0.276	1.46	0.87	1.16
2002-03	12.23	11.96	24.19	0.204	0.128	0.332	1.67	1.07	1.37
2003-04	12.26	12.63	24.90	0.245	0.179	0.423	1.99	1.41	1.70

* Source: Economic Survey of Pakistan 2004-05 and Pakistan Statistical Year Book 2002-03

Table 17: Percentage of Population Between Age Group 18 to 23 years, Enrolled at University Campus for Higher Education.

Year	Est. Pop Age Group 18 to 23 yrs. (Million) *			Enrollment Excluding Ph.D. (Million)			Enrollment at University Campus (%)		
	Male	Female	Total	Male	Female	Total	Male	Female	Total
2001-02	8.39	8.28	16.67	0.172	0.101	0.273	2.05	1.22	1.64
2002-03	8.56	8.43	16.99	0.201	0.127	0.328	2.34	1.51	1.93
2003-04	8.58	8.91	17.50	0.240	0.177	0.417	2.79	1.99	2.38

* Source: Economic Survey of Pakistan 2004-05 and Pakistan Statistical Year Book 2002-03

6 Finances

Total Budget, expenditure on Research and Library from Non - development (Recurring) budget, development and non-development expenditure excluding the amount of projects and Income generated by the universities through their own sources during 2003-04 is given in **Table 18**.

Funds provided by the Higher Education Commission to the Public Sector universities for development and non-development expenditures are given in **Table 19**.

Table 18: Total Budget, Expenditure on Research and Library from Recurring Budget, Recurring & Non-Recurring Expenditure and Income Generated through Own Sources by Public and Private Sector during 2003-04 (Million Rs.).

Sector	Total Budget	Research Expenditure *	Library Expenditure *	Non- Development Expenditure *	Development Expenditure *	Income From Own Sources *
Public	13356.032	202.078	139.454	11312.062	1568.248	5801.324
Private	6352.254	159.389	106.748	4875.878	1098.511	5574.359
Overall	19708.286	361.467	246.202	16187.940	2666.759	11375.683

* = Excluding the amount of projects.

Table 19: Funds Provided by the Higher Education Commission to the Public Sector Universities for Non-Development and Development Expenditure for the period 2001-05.

Budget	2001-02	2002-03	2003-04	2004-05
Non Development	3377.985	4110.514	5312.838	5379.470
Development	423.927	4265.009	4968.450	8940.076
Total	3801.912	8375.523	10281.288	14319.546

For Further Queries & Suggestions Please Contact

Ahmad Yahya Khan

Director Statistics
Higher Education Commission
Phone: 051-9040521, e-mail: ayahya@hec.gov.pk

=====